

Radio Automation and Content Management

iMedia Software continues to advance our iMediaTouch radio automation. iMediaTouch Enterprise provides an innovative new customizable on-air user interface making live-assist more intuitive and enjoyable to work with. Other new features are enhanced library search, remote web portal, rain delay/alternative log and sharing of content, programming and resources across the radio enterprise.



Radio Automation with a New Prespective.

The next generation of radio automation and content management from iMedia Software

Incorporating a new SQL based content management system and an innovative new customizable On-Air user interface, iMediaTouch Enterprise is a technology foundation for the future, embracing application interoperability and sharing of content, programming and resources across the radio enterprise.

On-Air Advanced

Customizable On-Air User Interface

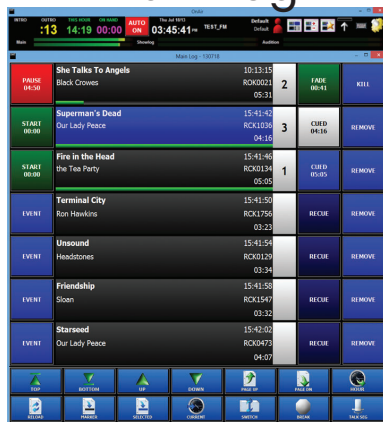


A unique and innovative customizable user interface that supports multiple custom screen layouts for multiple users. Let your on-air talent choose the features, modules and layout best suited to their show needs. Multiple monitor support in full HD 1080p resolution in either landscape or portrait orientation offers superior video and display flexibility. Support for both mouse and touch screen control interfaces.

Core Modules

Choose the Modules and Create a Custom Layout

Main Log



Core playback automation, device control and current day schedule management module providing comprehensive features for a wide-range of radio broadcast automation applications.

- Support for live assist, unattended and satellite automation
- Drag and drop content insertion and manipulation
- Seven event display for simplified management of current and upcoming events.
- Advanced user interface features including simplified touch screen controls, mouse and console control
- User definable "Favorite" button displays any module on demand saving screen real-estate in layout design
- On-Demand "Alternate Log" for live event delays and more
- Up to 8 discrete and 64 virtual audio playback outputs

Audio Library



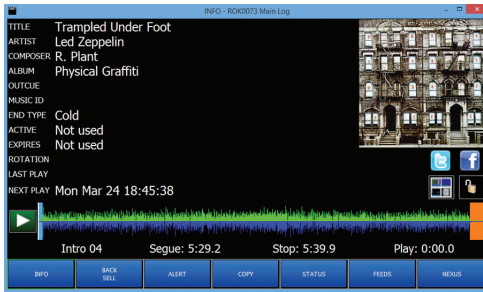
SQL based content management system provides Enterprise with a high performance media database. Advanced search capabilities combined with drag and drop functionality provides air staff with fast access to media and meta-data.

- Search by Cart Number, Title, Album, Artist, Composer
- Advanced fuzzy search
- View by category
- Sort by any field

Core Modules

Choose the Modules and Create a Custom Layout

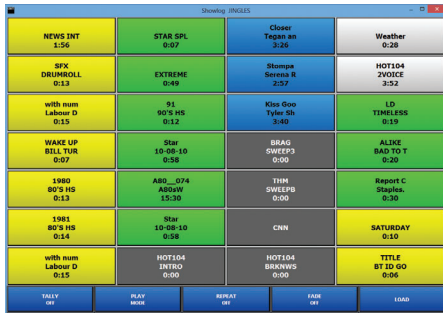
Multi-View



The unique Multi-View Module provides quick access to content meta data and system functions from one screen. Audition any audio element on a dedicated discrete channel with a dedicated meter on the header bar. Simple tab access to additional features:

- Info – provides detailed meta data display and auditioning for audio content. The Info Tab also provides “right-click” access for any audio element on the screen.
- Back Sell – display of last played and upcoming songs
- Alert – display of alert messages
- Copy – live copy read text with “Confirm Read” to affidavit log
- Status – system status information
- Feeds – list of available live feeds
- Nexus – Music Master song substitution live interface

Show Log and Show Log +

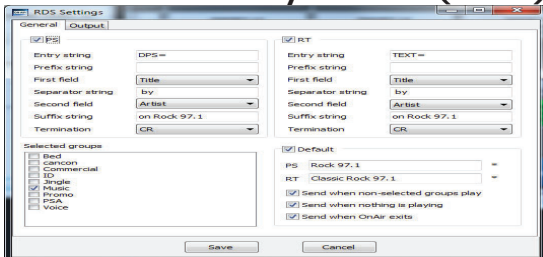


Hot start “Cart Wall” for on demand instant playback of beds, sound effects, ID’s, feeds and any audio item in the library. Play or insert to current schedule. Color coded by category for quick recognition. Support for 4 discrete audio channels and up to 32 virtual audio channels with a dedicated meter in the header bar.

- 200 show logs with 28 items each
- Customizable button labels
- Color coded by category
- Rotation support
- Drop liner integration for satellite automation

✚ A second hot start “Cart Wall” with all the features of the Show Log plus a “Segue Play” mode for automated playback of a series of audio items

Radio Data System (RDS)



Description

- (New) RDS character set selection
- Support for wide range of RDS encoders
- User defined field output control for both PS and RT
- Optional default PS and RT fields for non-music spots
- TCP or UDP output for network connection
- Legacy setting for older RDS encoders

Full Log



Access to the full current day schedule including past, current and future schedule items. Comprehensive schedule controls supporting both mouse and touch screen interfaces to view and organize schedule elements to finesse your program delivery. Drag and drop from the audio library, move schedule elements within the full log and into the main log.

- Full day schedule management
- Drag and Drop element manipulation
- Swap elements

Audio Recorder



Instantly record and edit audio for immediate playback, insertion into mail log or archive for future use. Great for phone bits and other ad-hoc recording needs.

- Instant record and edit
- Immediate live playback
- Store to audio library
- Insert into Full Log

Optional Modules		Full suite of optional modules for a complete solution	
Production	Advanced audio production and content management system featuring <ul style="list-style-type: none">• SQL CMS audio content management system• Record, edit and transcode various formats• Waveform editing with multiple edit decision lists• Audio import and CD Ripping• Audio Normalization• Supports sequential and weighted rotations, activate dates and expire dates		
iMediaPortal	Web based access to the Enterprise SQL CMS where Web users can search, browse, play and download media. Featuring: <ul style="list-style-type: none">• Station information (eg: OnAir status)• Station AsRun logs• Audio asset transaction log• Advanced search• Upload and import content		
Log Tools	Integrated schedule creation, management and reporting system featuring: <ul style="list-style-type: none">• Real Time connectivity to On-Air for current day changes• Audio auditioning of schedules• Integrated to SQL CMS audio library• Traffic and music reconciliation with reporting• Clock template generator for satellite and live programming• Import and merge schedules from traffic and music systems		
Voice Tracking Local and Remote	Sophisticated voice tracking system to produce a “Better than Live” sound. Key features include: <ul style="list-style-type: none">• Seek to voice track segment• Interactive audio auditioning• Real time connectivity to On-Air for current day productions• Dynamic adjustment of segue and volume• Auto post and duck for quick professional sound• Drag and drop sound effects and beds.• Remote Voice Track Portal		
On-Air Remote	Full function On-Air for remote operation of your broadcast system. Use in the studio over the LAN or remotely over an internet connection. Up to 4 simultaneous remote connections for unique and flexible configurations.		
iMediaImport	Automatic import of audio content. Simplify import of programming, production house spot delivery, music and import of post-production content from third party applications. Includes our FTP scheduler to automate show and spot downloads based on time or frequency. <ul style="list-style-type: none">• Weekday selection• Time selection in hourly or specific minute• Category selection with base ID• ID logic assignment including number search• Filename matching		
Reliability			
On-Air Teaming	Never miss a beat with this robust fault tolerance configuration providing a fully synchronized primary and secondary hot standby.		
Store & Forward	Advanced capabilities for automatic back-up of database, content and schedules to/from the main On-Air featuring automated fail-over and fail-back to master.		
Compatibility			
Audio Equipment	<ul style="list-style-type: none">• Compatible with most WDM based audio cards, and Broadcast Tool switchers and I/O devices• Supports AoIP with Wheatstone and Axia consoles		
Computer Hardware	<ul style="list-style-type: none">• Compatible with Windows™ 10 Pro 64 bit, Intel™ i series workstations (Enterprise) (Win 7 Pro V4)• Compatible with Windows™ Server 2019		
Music & Traffic Systems	<ul style="list-style-type: none">• Compatible with most music and traffic scheduling systems including MusicMaster,• Marketron, SDS, Natural, WideOrbit, Selector, PowerGold and many more.		
Options			
System Integration	<ul style="list-style-type: none">• Complete solutions including software, hardware and training. Fully integrated and tested solutions for a wide range of broadcast applications.		