

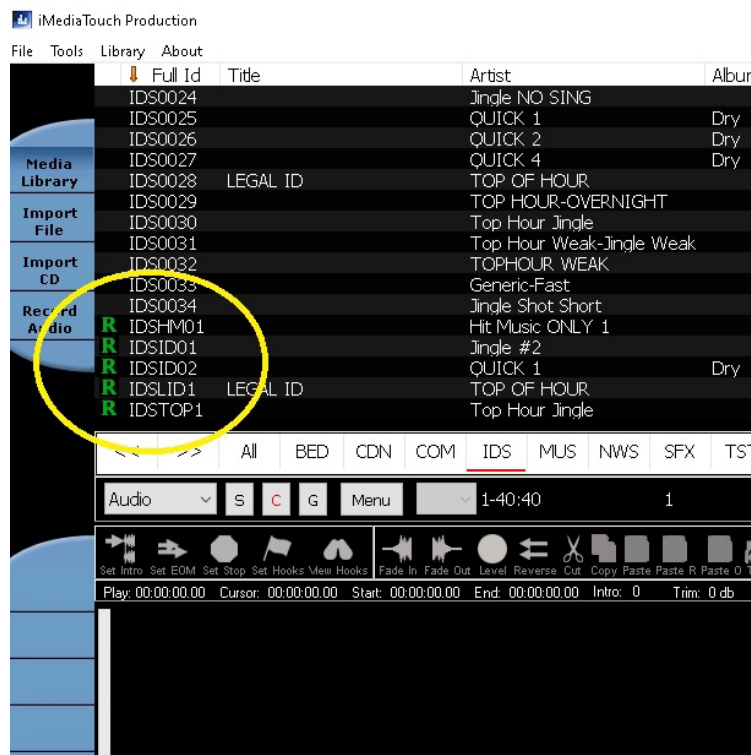
How Rotations are utilized in Enterprise Production

Rotations differ significantly from how they were utilized in our legacy V4 Automation suite. Rather than use the 'old' Base cut method for assigning and using rotations within the win-omt database, Enterprise Production leverages the greater capacity and flexibility of the mysql win-omt database and uses a 'Redirector' method.

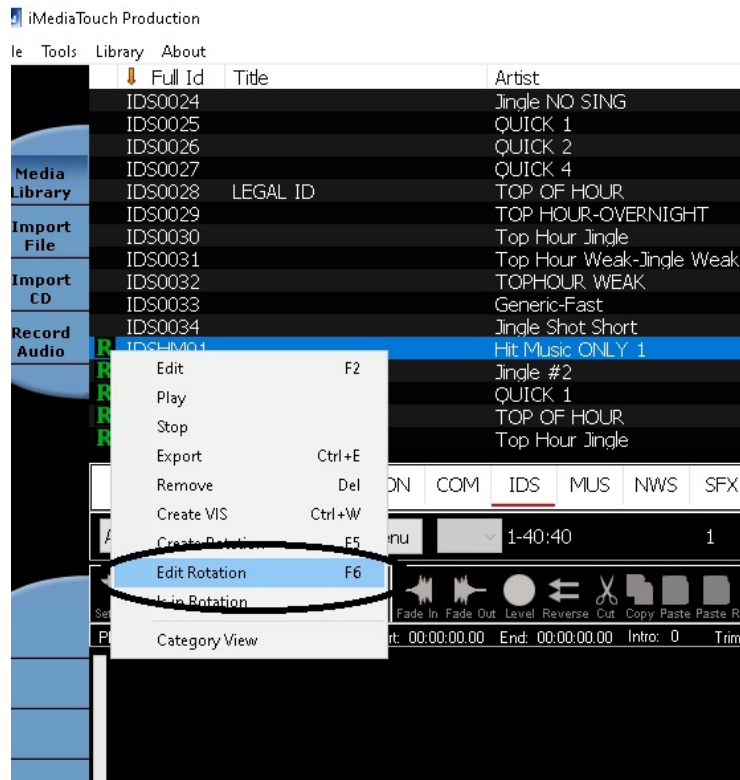
Simply put, Enterprise uses unique CartID's for each element added to a rotational CartID. The Rotation 'main' cut number is used for scheduling the Rotation. It, itself does not contain any audio on it – it is simply a 'redirector' to have the system play the next assigned audio cut that has been assigned to that rotation.

The direct advantages are two-fold:

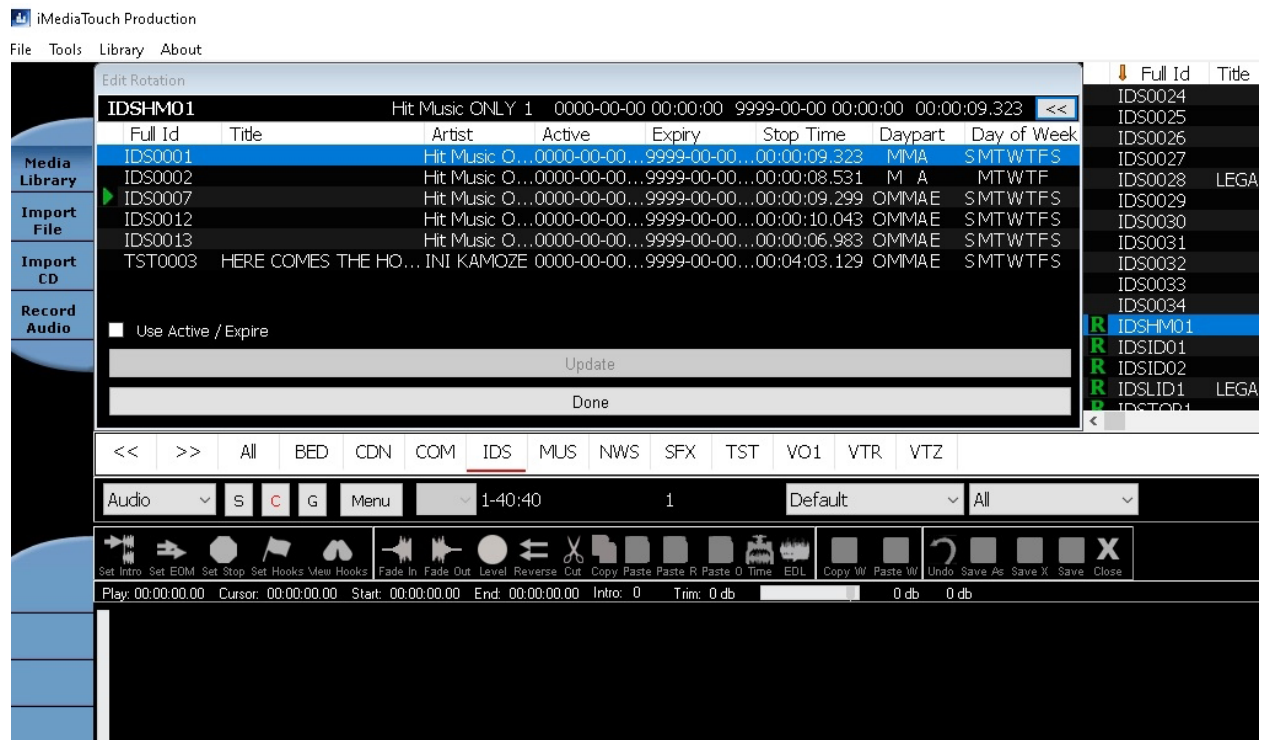
- 1) The user is no longer restricted in assigning audio all from the SAME category into their rotations any longer. Now, you can assign audio from multiple categories into a single rotation.
- 2) This also allows the user to 'weight' their rotations. Meaning, you can make duplicate entries of the same audio within a rotation if you want for example – a single audio cut to play twice or three times as often as the other audio assigned to a particular rotation.



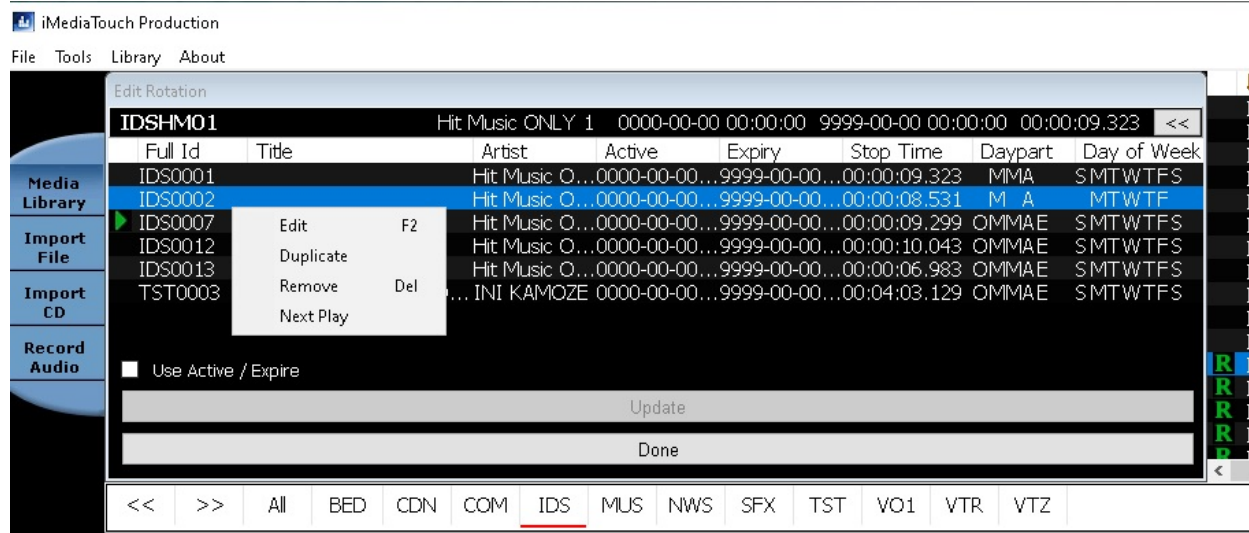
Rotations are easily identified in the Production database as they are marked by a big **GREEN 'R'** within the category view.



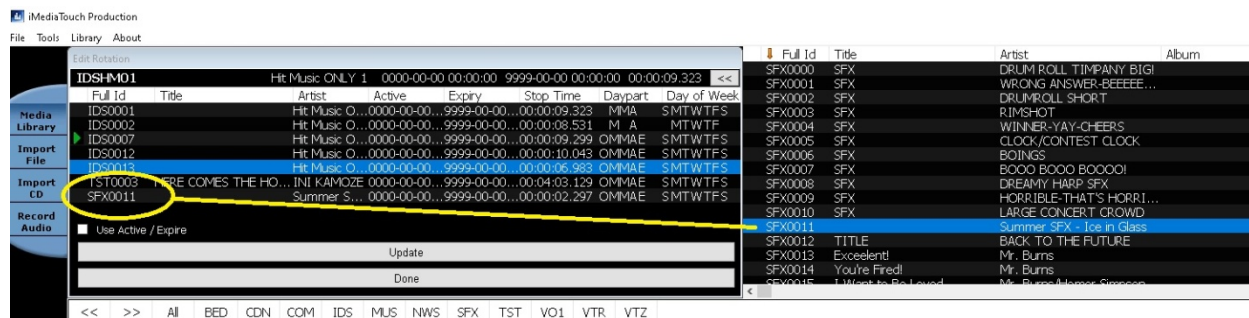
In order to see the assigned content of specific Rotation you can right click on the desired rotation and select 'Edit Rotation'.



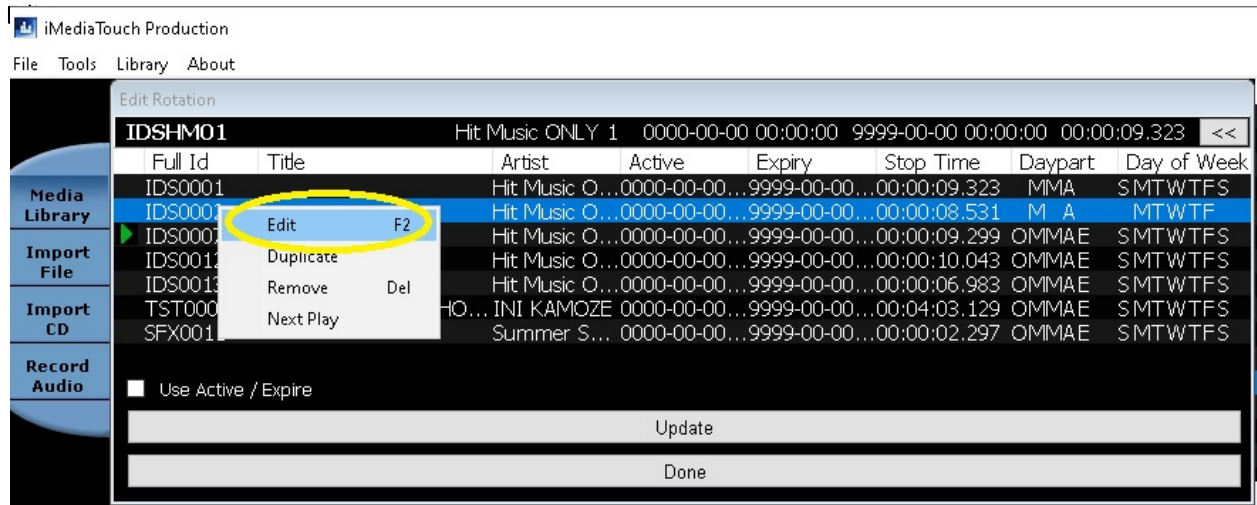
In the Edit Rotation screen you can see, edit, duplicate, and assign next play for any of the assigned audio CartID's within the Rotation. You can also assign a Day parting assignment to any of the assigned audio.



Add to Rotation

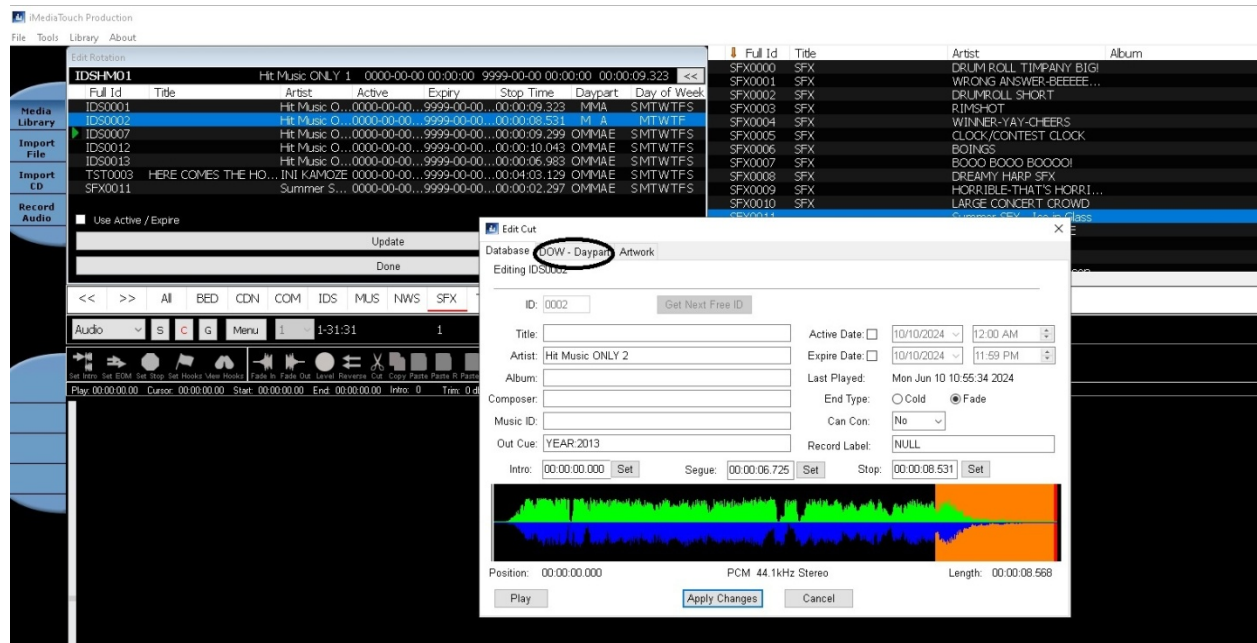


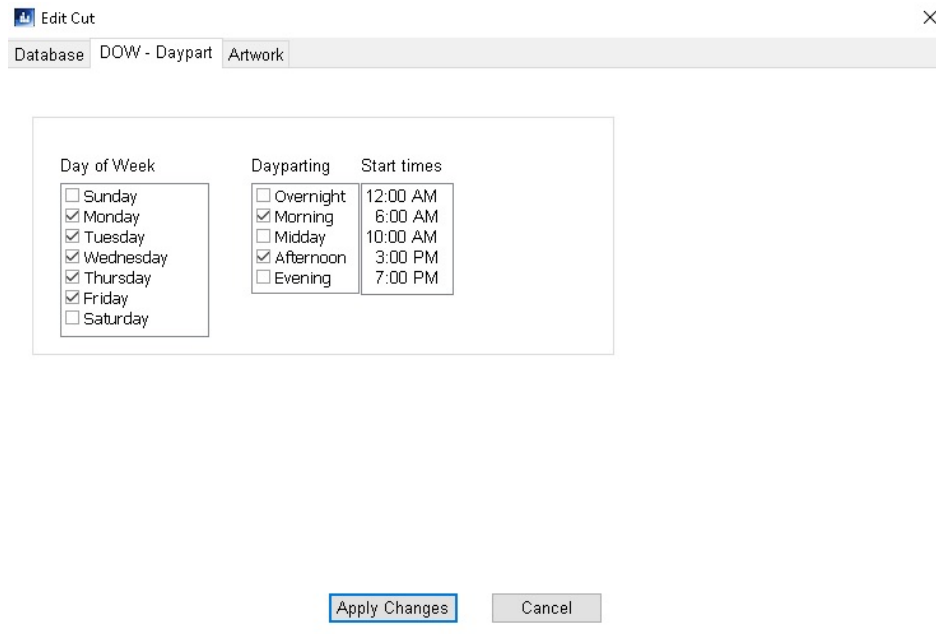
Simply, browse or search your categories for the audio you want to add and drag and drop into the Edit Rotation screen.



From the Edit Cut screen, you can change any of the Cart header info, add, edit or remove Active and Expiry dates, Add Album art, etc.

Assign Dayparting



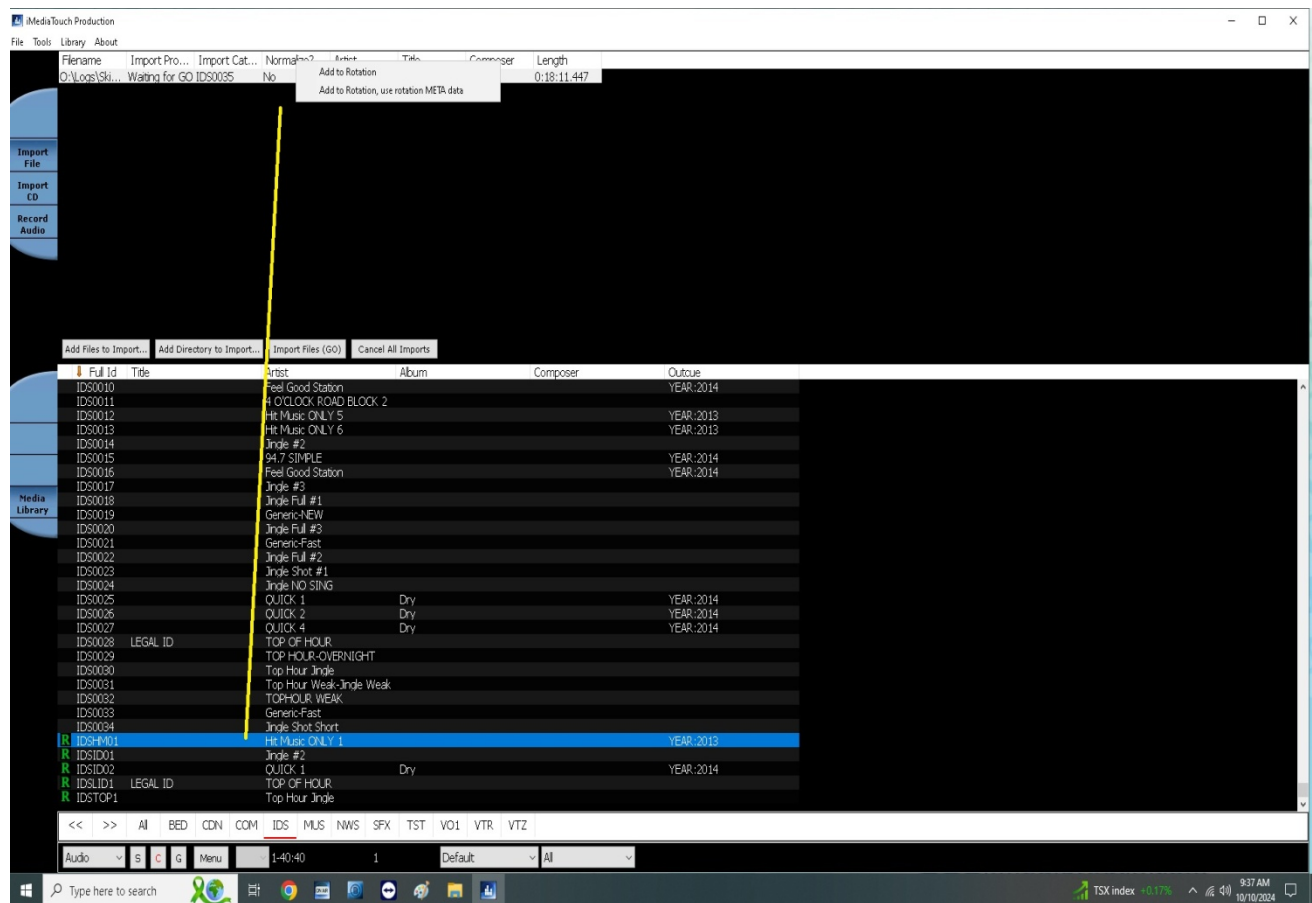


In the Dayparting tab of the Edit Cut screen you can add or remove any Day of the Week, and Dayparting hours that you wish to apply for the specific audio that you've assigned to your rotation.

Also you can 'auto' assign an audio cart upon importing new audio into the database directly to the rotation. You will have to click on 'Library' on the top main toolbar, and click on 'Bottom' or press F12.



This will move your entire win-omt database display to the bottom portion of the Production screen:



From here you can select the audio file(s) you want to import directly to your selected rotation. Simply, drag and drop your Rotation to the selected audio in the Import screen. You can then select to assign the imported audio with or without the Rotation Meta Data.

Enterprise Rotations are a powerful tool in managing your audio within your win-omt database, there are many more benefits and features available with it that you can uncover.

For more information about Enterprise contact Support at support@imediataouch.com 800-726-2635 or Sales at sales@imediataouch.com or 888-665-0501.